

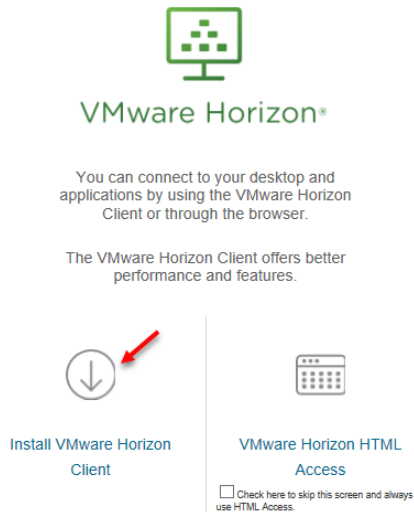
How to Install and Connect to your Virtual Machine from a Windows PC

Document Links: [Install the VMware View Client](#) [Connect to a Virtual Machine](#)

Install the VMware View Client

1. Navigate via a web browser (e.g. Internet Explorer, Firefox, Chrome) to the following website <https://vdi.nwtc.edu/>

2. Click **Install VMware Horizon View Client**



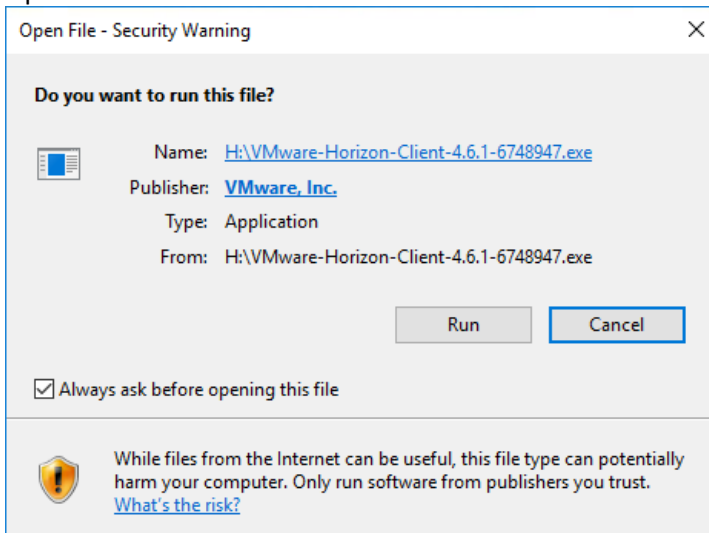
3. On Product Downloads Select **Go to Downloads** for **VMware Horizon Client for Windows**.
Note: Do Not Use VMware Horizon Client for Windows 10 UWP

Product	Release Date	
▼ VMware Horizon Client for Windows		
VMware Horizon Client for Windows	2017-10-03	Go to Downloads

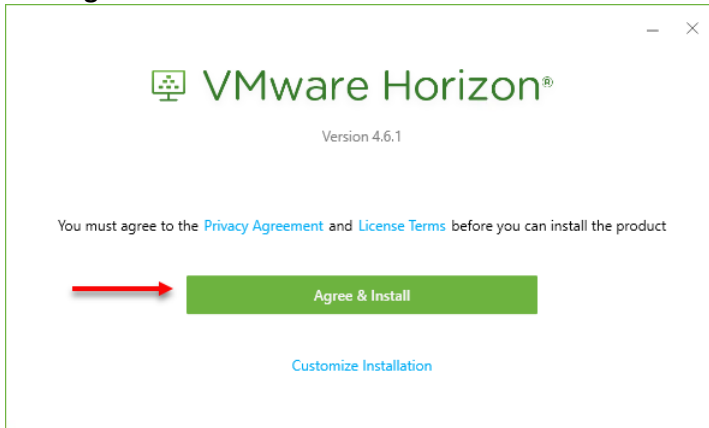
4. Click the **Download** link



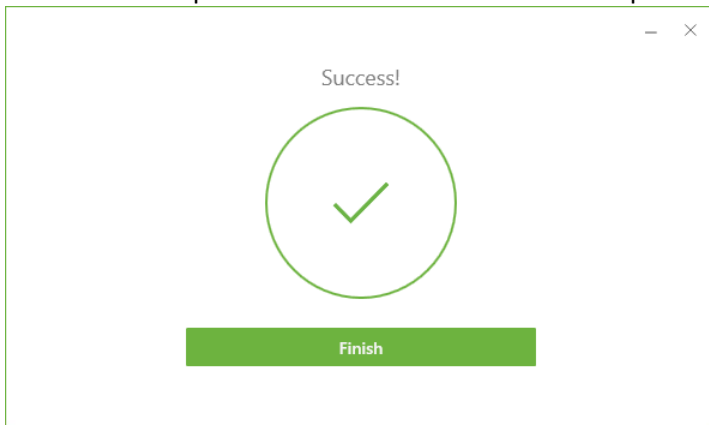
5. Open the downloaded file and Click **Run**



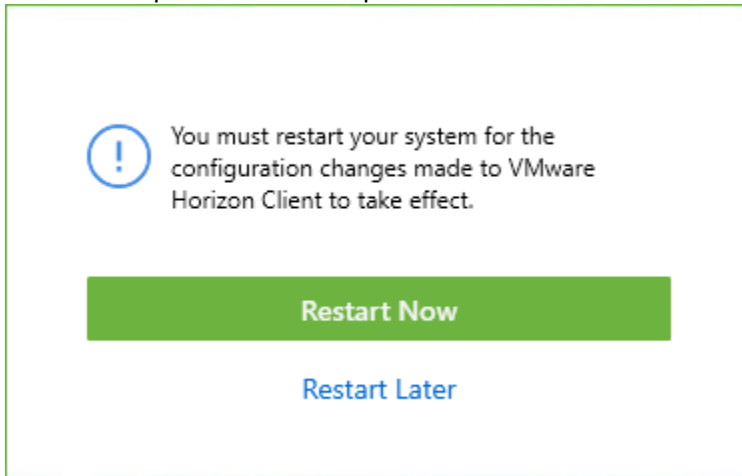
6. Click **Agree & Install**



7. Installation will proceed and Select **Finish** when complete

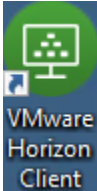


8. Reboot Computer when Prompted



Connect to a Virtual Machine

1. Launch **VMware Horizon View Client** from the desktop or from the programs list



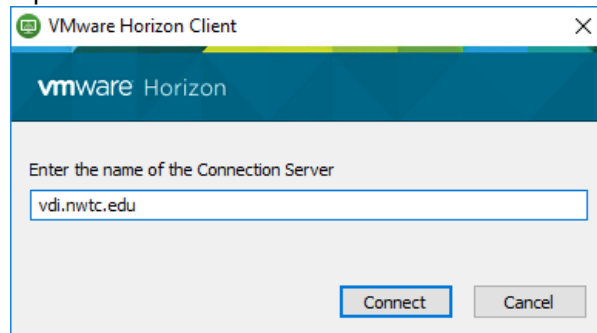
2. Double-click **vdi.nwtc.edu**



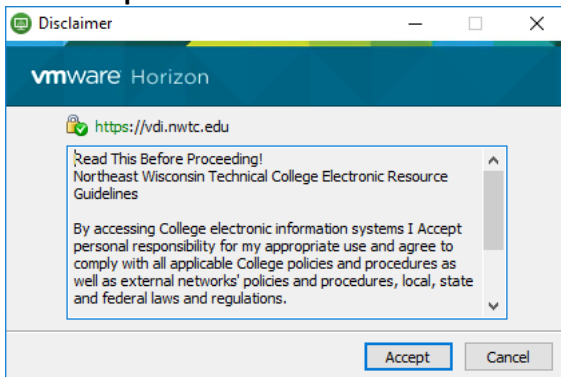
- a. If this is not available Select **+ Add Server**



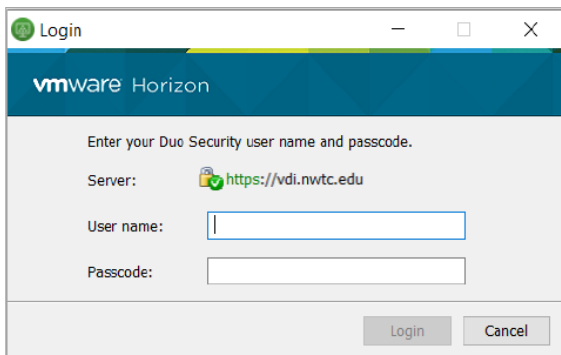
- b. Input **vdi.nwtc.edu** and Select **Connect**



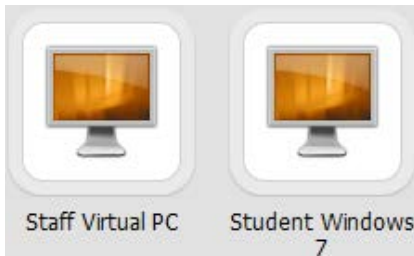
3. Click **Accept**



4. Enter your **user ID** and **password** and click **Login**



5. If you are entitled to more than one virtual machine double-click the virtual machine you want to connect to



6. When you are done using the virtual machine click **Start > Log Off**

