



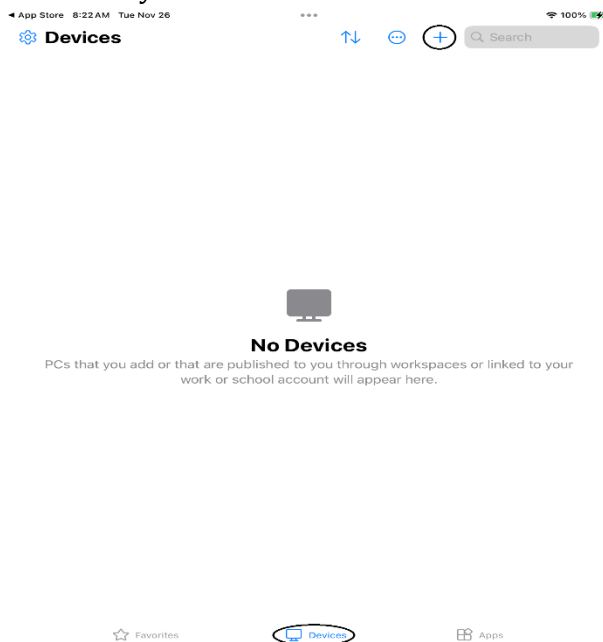
## NWTC Virtual Software Access with iPhone or iPad

1. Install Windows App Mobile from the App Store

Note: you will need an apple ID to install this software from the app store.

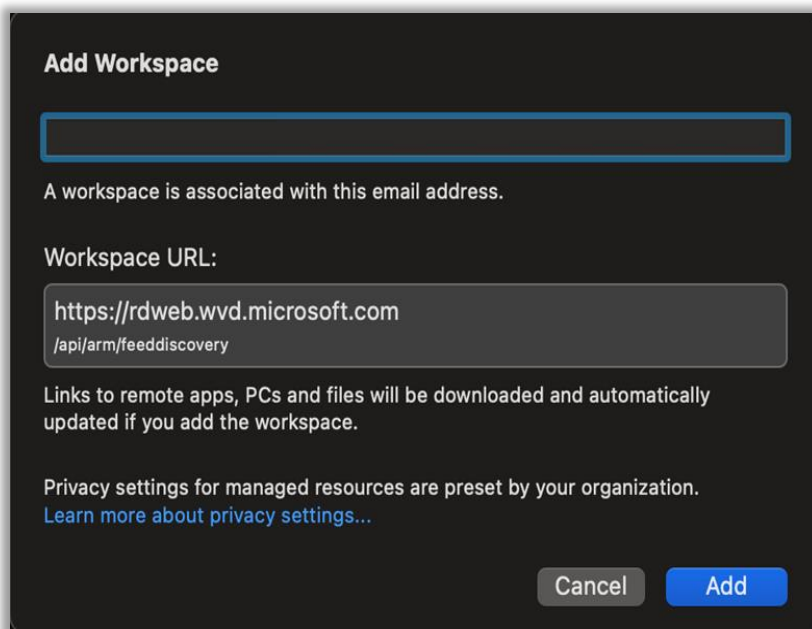
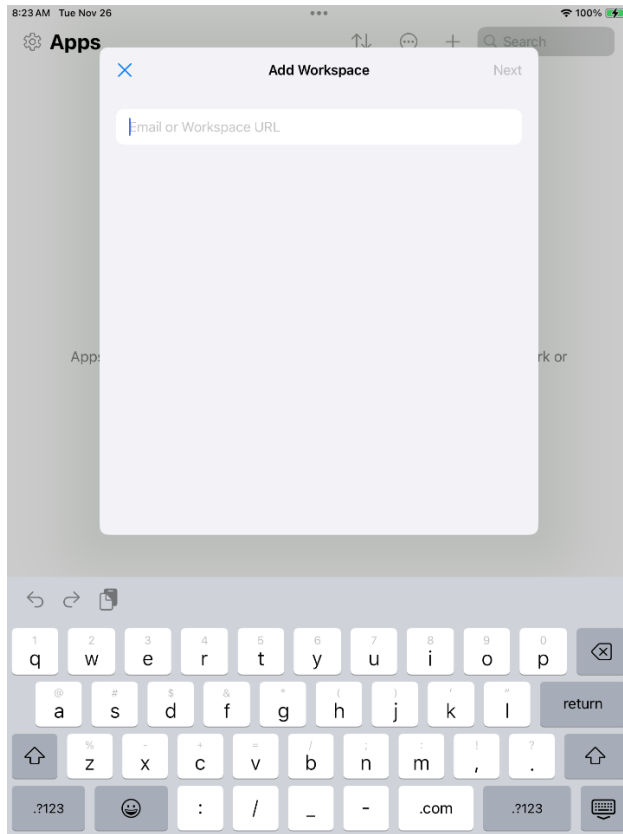


2. Open Windows App Mobile and Skip "Welcome to Windows App"
3. Make sure you are in Devices and select the + button at top



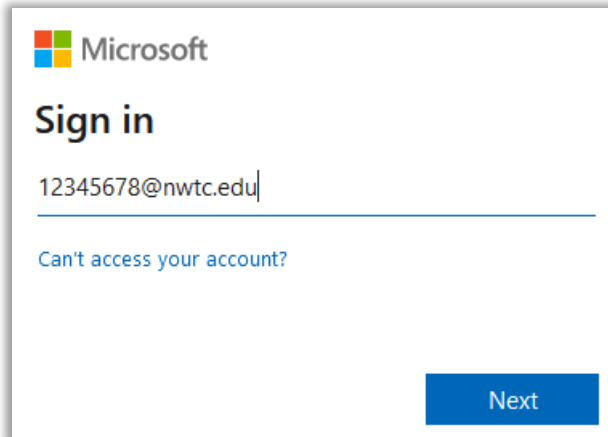
- At the add workspace prompt, use your NWTC student or employee ID number, followed by @nwtc.edu, then click the Add button

Example: [12345678@nwtc.edu](#)



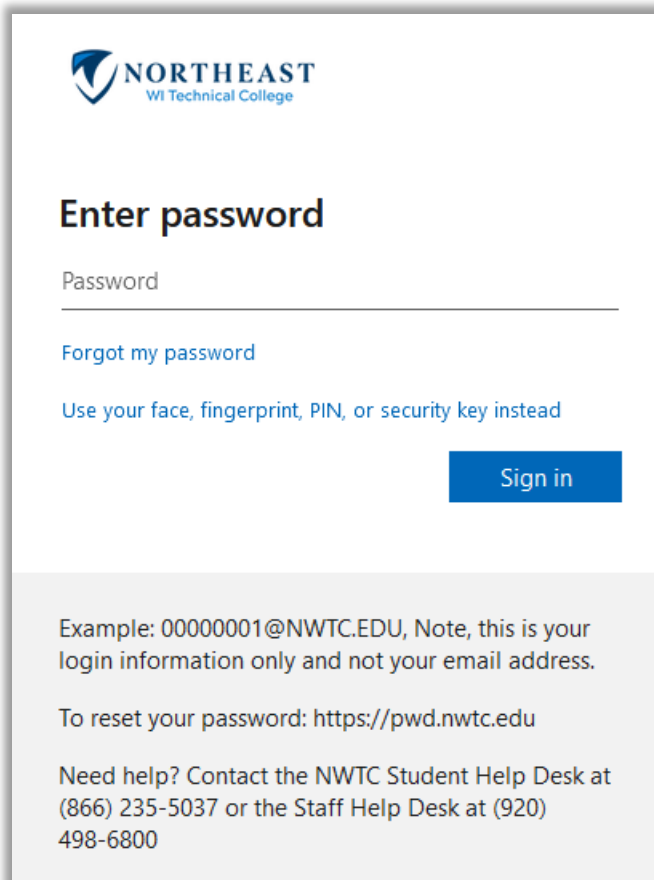
5. At the Microsoft Sign in, use your NWTC student or employee ID number, followed by @nwtc.edu

Example: [12345678@nwtc.edu](#)



The image shows a Microsoft Sign in screen. At the top left is the Microsoft logo. Below it, the text "Sign in" is displayed. A text input field contains the email address "12345678@nwtc.edu". Below the input field is a link that says "Can't access your account?". At the bottom right is a blue button labeled "Next".

6. Enter your NWTC account password



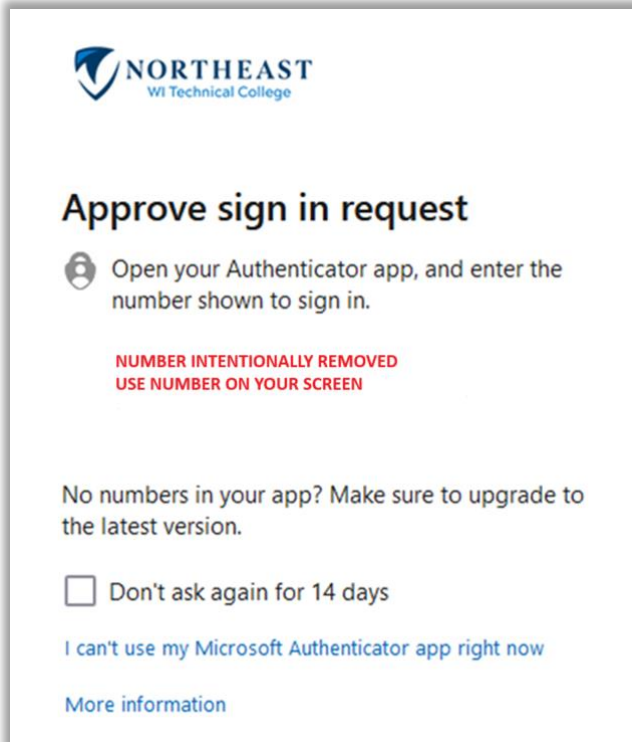
The image shows a login screen for NORTHEAST WI Technical College. At the top left is the college's logo. Below it, the text "Enter password" is displayed. A text input field is labeled "Password". Below the input field is a link that says "Forgot my password". Below that is a link that says "Use your face, fingerprint, PIN, or security key instead". At the bottom right is a blue button labeled "Sign in".

Example: 00000001@NWTC.EDU, Note, this is your login information only and not your email address.

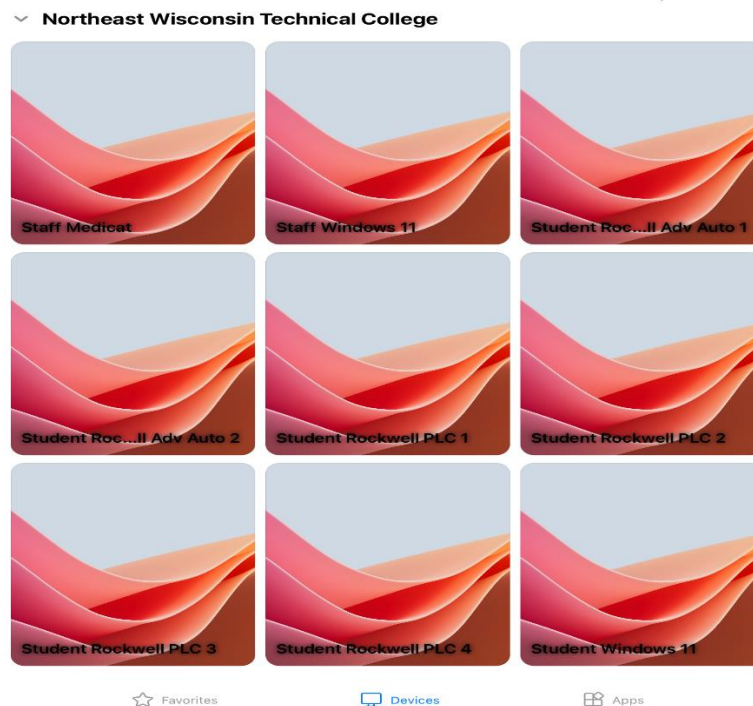
To reset your password: <https://pwd.nwtc.edu>

Need help? Contact the NWTC Student Help Desk at (866) 235-5037 or the Staff Help Desk at (920) 498-6800

7. Approve the sign in by completing the two factor request



8. Chose Windows Student or Windows Staff (if you are both staff and student but are doing course work, choose Windows Student to access student software)



9. If it asks to login again, enter your username and password, ensuring that username is your NWTC student or employee ID number followed by @nwtc.edu and password is your NWTC account password

Example username: 12345678@nwtc.edu

#### Enter Your User Account

This user account will be used to connect to rdgateway-r1.wvd.microsoft.com (remote PC).

Username:

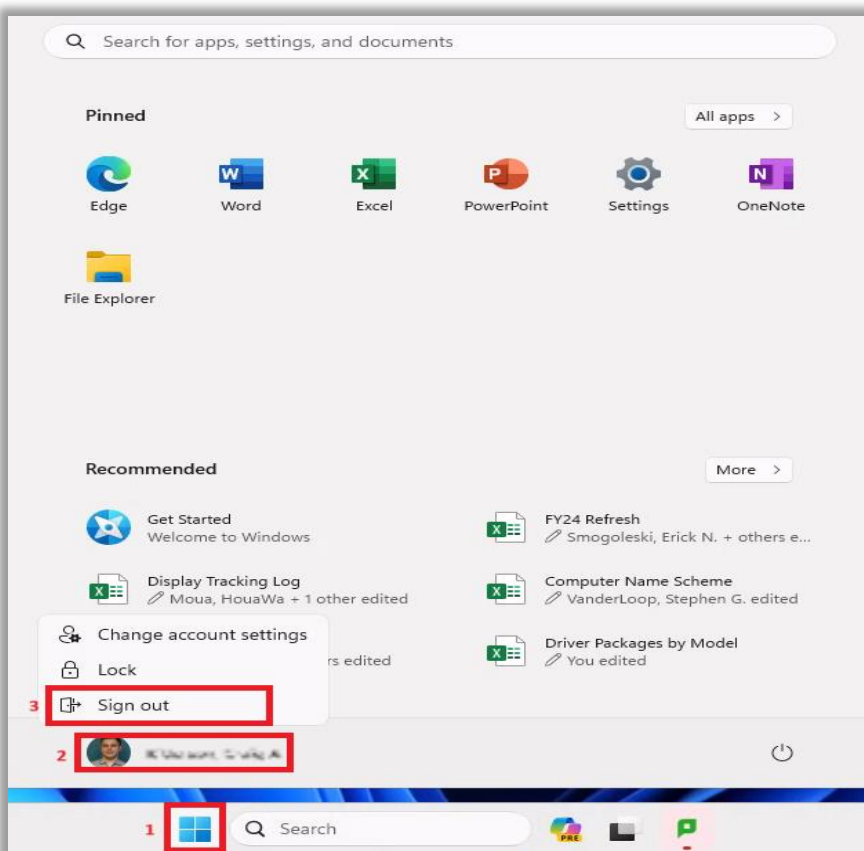
Password:

☐ Show password

Cancel

Continue

10. After pressing enter or clicking submit, you will be logged into the NWTC Windows computer with NWTC software. Once you are finished, log out of the desktop by clicking on the start menu in the NWTC computer, clicking on your NWTC user name, and choosing "Sign out" in the menu



11. You can now close Windows App Mobile