



Dry Powder Inhaler General Instructions

Follow manufacturers instructions for use



My prescription: Drug _____ **Dosage** _____ **How often:** _____

This medication is a:

maintenance bronchodilator maintenance anti-inflammatory (corticosteroid)

Note:

My prescription: Drug _____ **Dosage** _____ **How often:** _____

This medication is a:

maintenance bronchodilator maintenance anti-inflammatory (corticosteroid)

Note:

Key points for all dry powder inhalers:

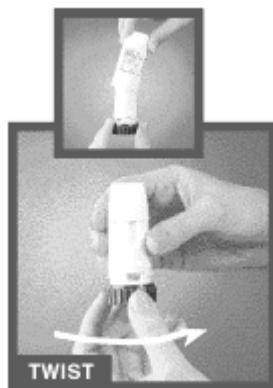
- Keep inhalers CLEAN and DRY. Never breathe into the inhaler. This will moisten the contents of the device causing it to not work properly. Never soak the inhaler in water.
- Keep the inhaler either in the upright position (such as when loading the medication) or in the horizontal position (when bringing the device to the mouth for inhalation). Never turn the inhaler upside down while in use.



**PULMICORT
Flexhaler®
“breath Activated
Device”**

Prime every new Flexhaler® by twisting bottom back and forth twice before following steps 1-7.

Window indicates the number of doses remaining. A red line appears when 20 doses left. When the window is completely red, inhaler is empty.



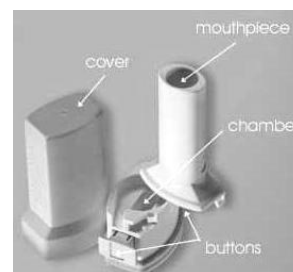
1. Remove the cap.
2. Twist the bottom back and forth to release the medication
3. Breathe out normally.
4. Place Flexhaler® mouthpiece between teeth with lips tight.
5. Inhale deeply, then hold breath for the count of 10.
6. If another puff ordered, repeat steps 2-5 after 1 minute.
7. Rinse and spit after use.

ASMANEX Twisthaler®
Looks like a Flexhaler with a PINK base. A few differences...

1. No need to PRIME.
2. Removing the CAP loads the medication and the window counts down by one.



SPIRIVA comes in a
Handihaler®
A once a day medication



FORADIL comes in an
Aerolizer®
A twice a day medication

The Handihaler® and Aerolizer® use a powder capsule which comes in a sealed packet. Unwrap only one capsule per use.

1. Remove the cap and open the device to expose the chamber for the capsule.
2. Place one capsule into the medication chamber and close the lid. (never place a capsule into the mouthpiece)
3. Puncture the capsule ONCE by squeezing the side buttons, then release.
4. Exhale away from the device.
5. Place the mouthpiece between teeth with lips tight.
6. Breathe in deeply and rapidly with a breath hold for the count of 10.
7. Open the device to see if all powder was inhaled. If not, close the lid and inhale again.
8. Open device to remove the gel capsule residue.
9. Close and replace cap.